



An Introduction to DCOM Precepting

DCOM Preceptor Development Series

LMU

DeBusk College of Osteopathic Medicine
LINCOLN MEMORIAL UNIVERSITY

VALUES | EDUCATION | SERVICE



DeBusk College of Osteopathic Medicine

LINCOLN MEMORIAL UNIVERSITY

Date: 7-12-2024

Presented by:

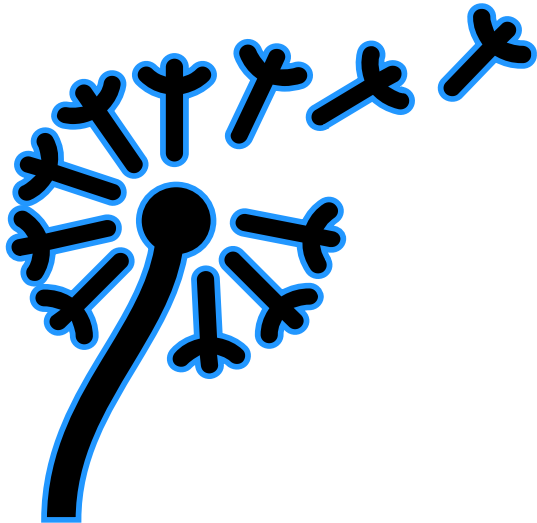
Danielle Darter MD

VALUES | EDUCATION | SERVICE

Disclosures

- I, nor any of my immediate family members have any financial relationship with or interest in any commercial interest connected with this presentation. Furthermore, there are no commercial interests associated with this presentation.

Objectives



- Familiarize yourself with the responsibilities of being a preceptor.
- Integrate these responsibilities throughout each rotation.
- Know student requirements and review their work daily.
- Utilize eValue, AACOM, Preceptor Development Faculty/Staff and other available resources.
- Contact Office of Clinical Education early and frequently with any feedback, questions or concerns.

Introductions



Introductions



What is your specialty?



Where do you practice?

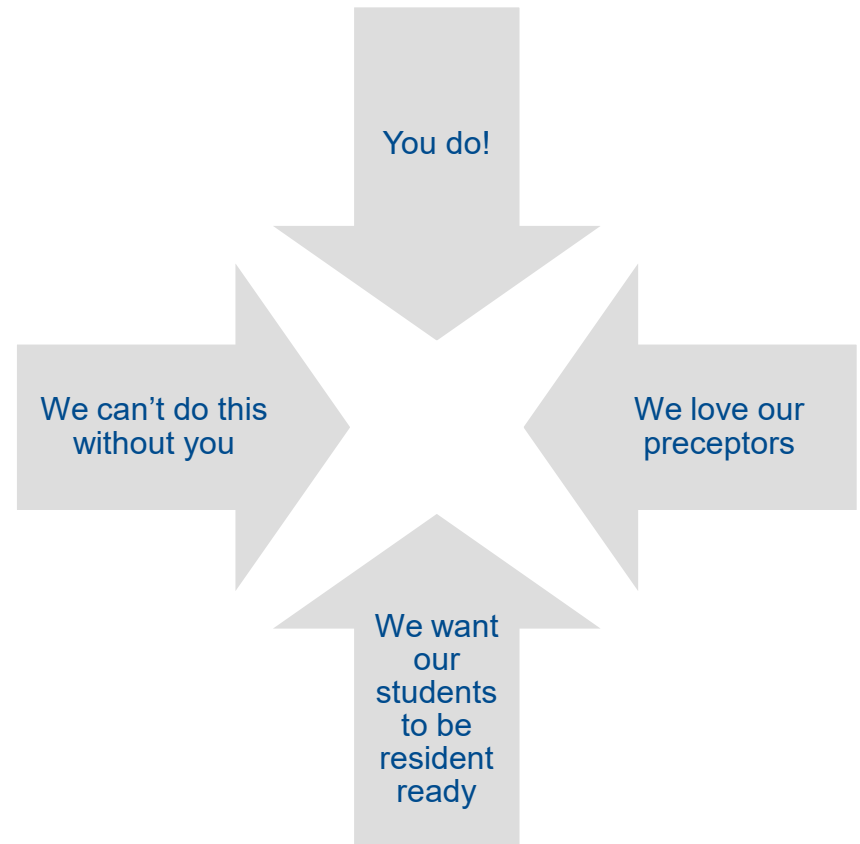


How long have you been precepting?

What motivates Us?



shutterstock.com · 1029299632



2023 Preceptor Survey



Passion for
teaching

Intrinsic
Value

Stay
Current

Developing
Next
Generation

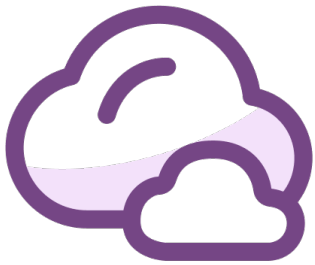
slido



**Join at slido.com
#870978**

① Start presenting to display the joining instructions on this slide.

slido



**Tell us what was made
your favorite preceptor
special to you**

① Start presenting to display the poll results on this slide.

slido



**What is your most
challenging preceptor
responsibility?**

① Start presenting to display the poll results on this slide.

Preceptor Responsibilities



Orient
Review
Feedback
Teach
Evaluate
Notify
LoR
Participate

Orienting



Schedule time for this on first day

Review your hours/ schedule

Review expectations

Show them around.

Daily Review



Oral presentations

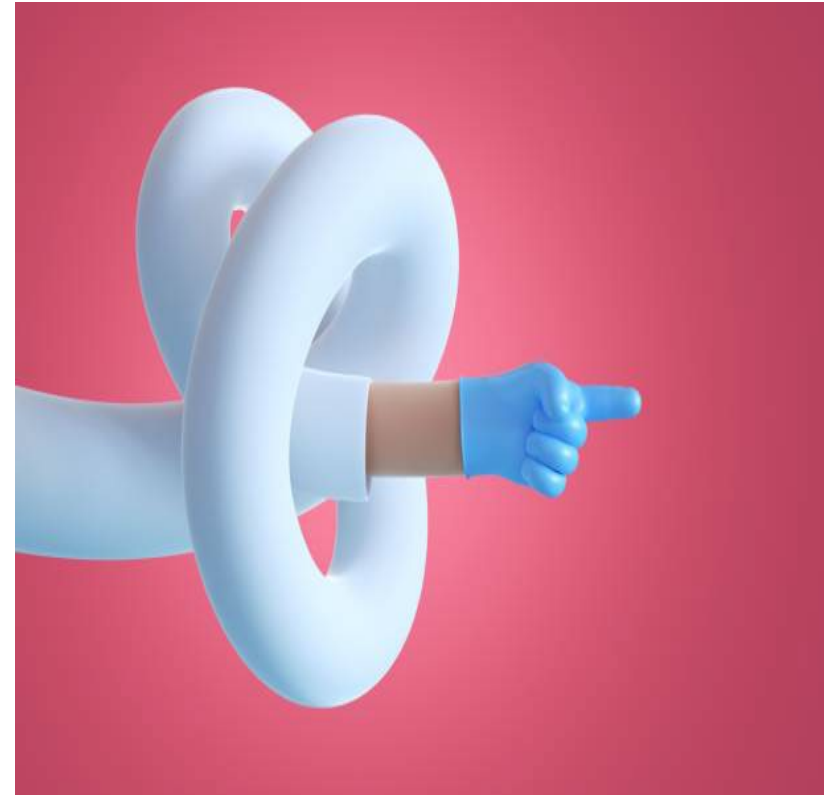
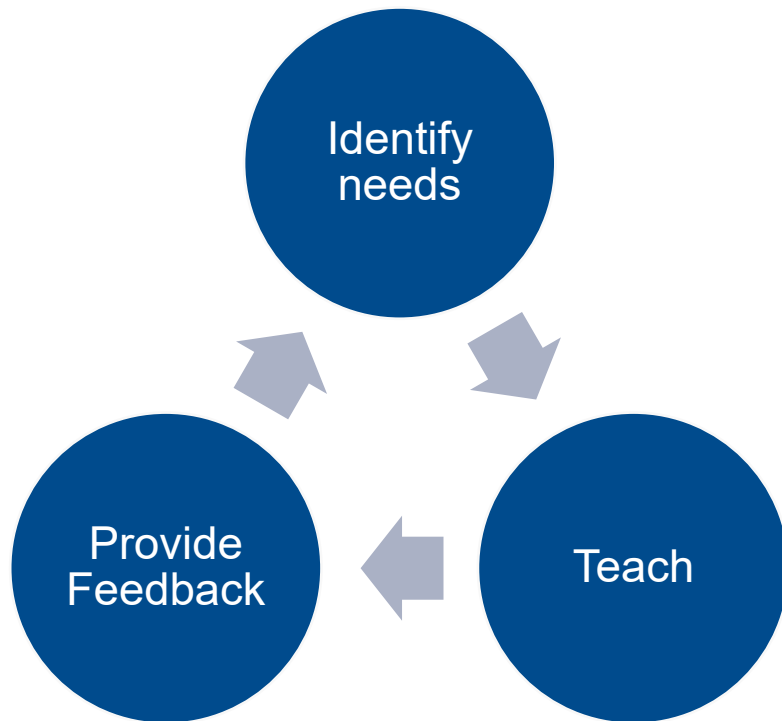
Written notes

Interactions

Feedback



Teach



Identify learner's needs



Target then
teach

Ask
questions

Conduct 2-
minute
observation

Rapid Teaching Methods

One-minute preceptor

- Get commitment, probe reasoning, teach, positive feedback, correct errors

Aunt Minnie model

- Rapid pattern recognition

SNAPPS model

- Learner controlled

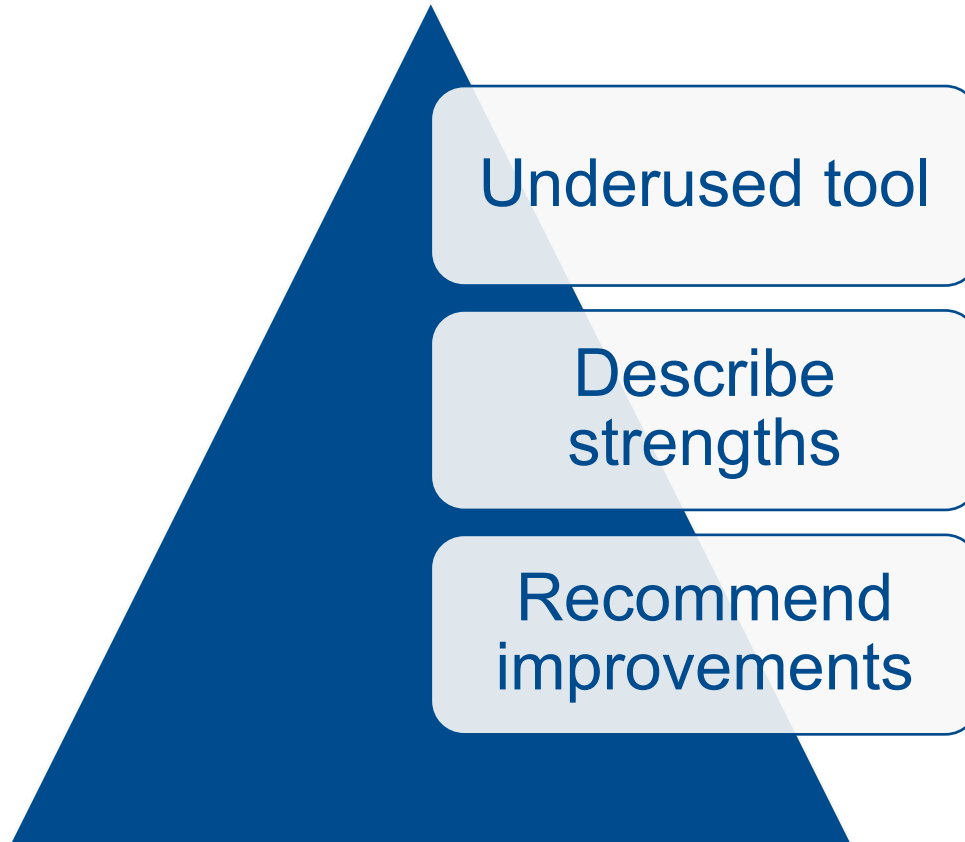
slido



What teaching methods do you employ while precepting?

① Start presenting to display the poll results on this slide.

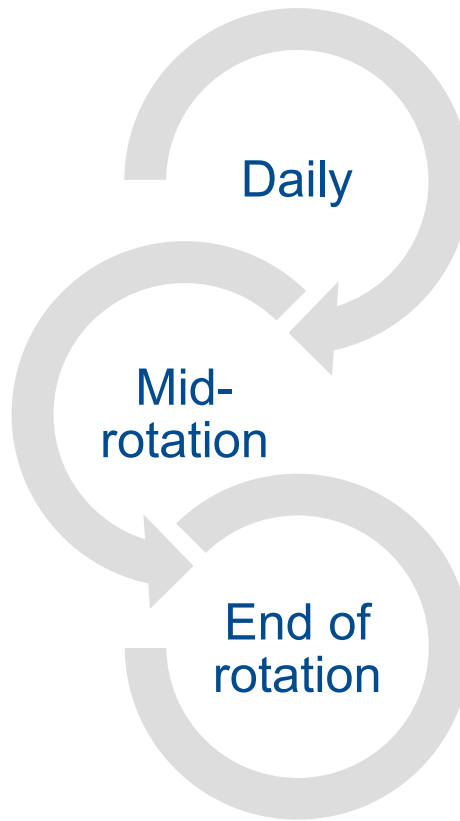
Provide feedback while teaching



One framework for feedback



Evaluations



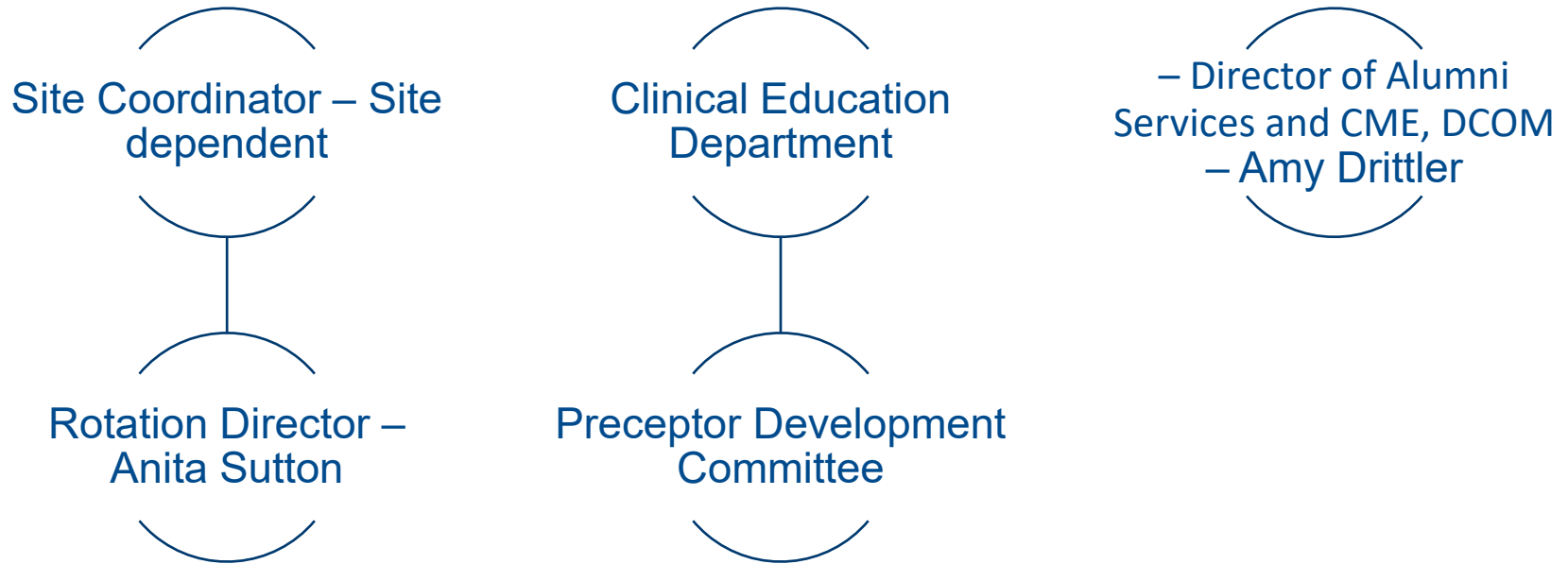
Not everyone earns an A

- Grade to the student's performance
- LMU-DCOM relies on meaningful grades
- Students rely on meaningful grades
- Not about making it easy or being popular, it is about preparing for residency

Notify



Preceptor Support



Letters of Recommendation - LoR



- Who will you agree to write them for?
- What will you write?
- When will you have it done?
- How will you write a strong LoR?

Participate



shutterstock.com • 401982568

Putting it all together



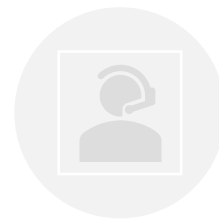
Know your
responsibilities
and resources



Integrate student
requirements



Review daily



Contact Us

What are student expectations

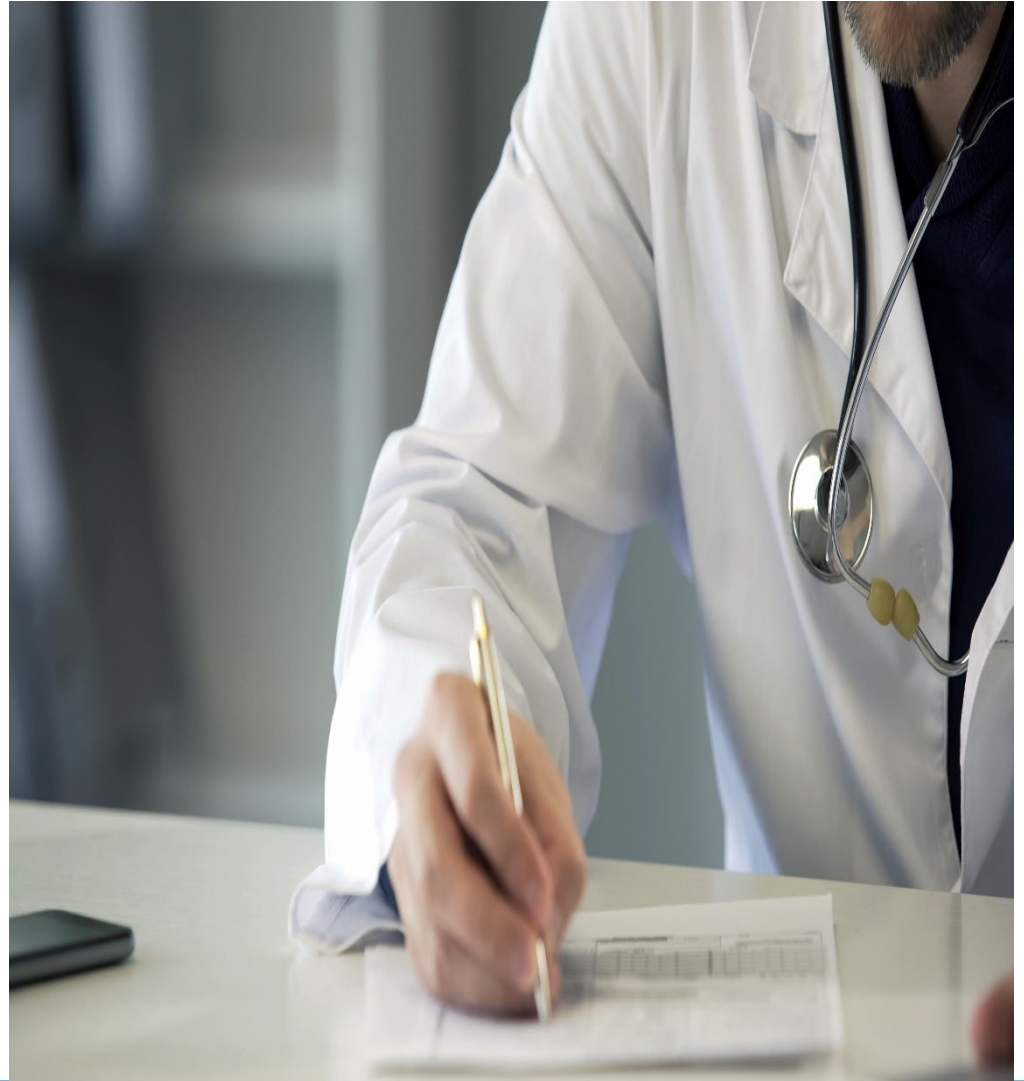


- Follow
- Write
- Examine
- Didactics
- COMAT

Follow



Write



Examine



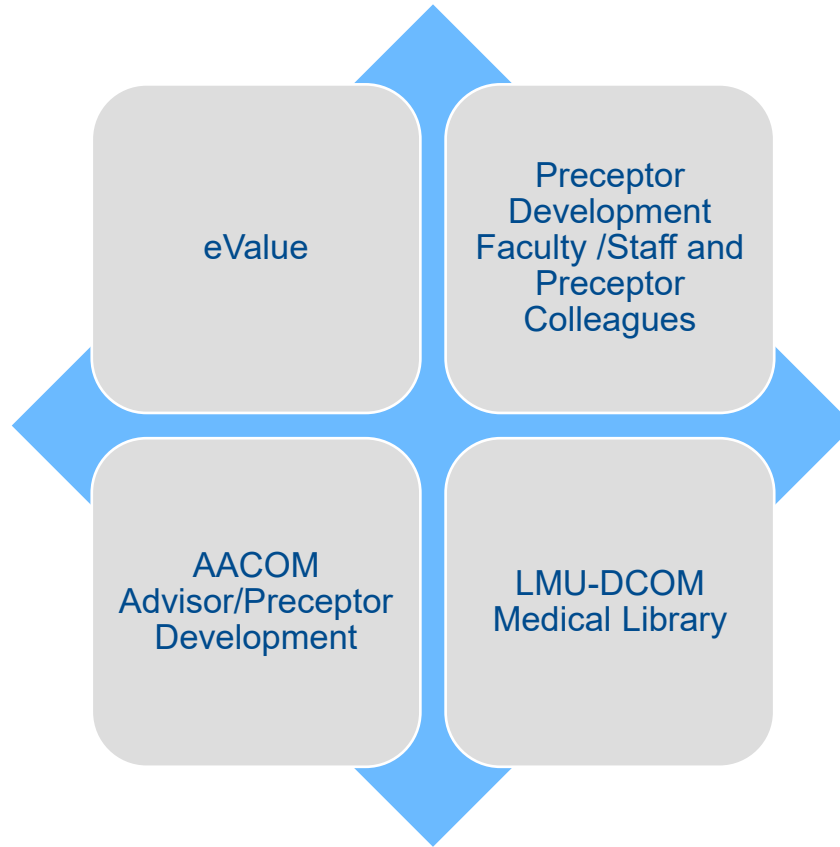
Didactics



COMATs



Preceptor Resources



Logging in to eValue

Go to e-value.net/login.cfm

Enter username (First name Last name)


First time logging in?

- Contact Anita Sutton – anita.sutton@lmunet.edu she will email a link to your username and eValue will then prompt you set up a password.

eValue



Lincoln Memorial University (LMU)
DeBusk College of Osteopathic Medicine
Program ID:5197

Danielle Darter, MD  Help Favorites ▾ My Account ▾

- Home
- Evaluations
- Reports

[Home Page](#) | [Other Tasks](#)

Email: danielledarter@yahoo.com
Rank: Clinical Adjunct Faculty
Roles: Preceptor

Personal Calendar

Sunday Nov 7	
Monday Nov 8	
Tuesday Nov 9	
Wednesday Nov 10	
Thursday Nov 11	
Friday Nov 12	
Saturday Nov 13	

[View myCalendar](#)

Tasks

[Initiate Ad hoc Evaluations](#)

[Course Syllabi](#) (New)

Updated 10/26/21 - A syllabus for each rotation will include rotation requirements and grading criteria. Syllabi are posted on EValue, where they are available for preceptors and students to view.

[2021 - 2022 Clinical Rotations Manual](#) (New)

Policies and Procedures for Clinical Rotations OMS-III and OMS-IV, Revision Date 07/16/2021

[Preceptor Evaluation of Student](#)

[Mid-Rotation Evaluation](#)

[Orientation Guide for Clinical Teaching](#)

AACOM Advisor/Preceptor Development

- <https://www.aacom.org/ome/professional-development/advisor-preceptor-development>

This Section:
Medical Education

- ▶ AACOM Councils and Groups
- Job Connection
- Careers at AACOM
- ▶ Medical Education Resources
- Online Communities for Medical Educators
- Preventive Medicine
- ▶ Professional Development
 - Advisor/Preceptor Development
 - ▶ Faculty Development
 - Curriculum Content
 - ▶ Osteopathic Core Competencies
 - ▶ AACOM Admissions & Student Affairs Monthly Forum
 - Programs and Funding

Advisor/Preceptor Development

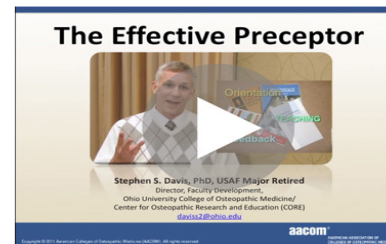
Advising medical students regarding their career-related choices and working one-on-one with them in clinical settings are typical behaviors for most medical school faculty.

Preceptor Videos



Five Microskills for the One Minute Preceptor

A valuable tool for preceptors in busy clinical settings. Tyler Cymet, DO, Cheryl Doane, DO, Michael Rowane, DO, R. Taylor



The Effective Preceptor

Stephen S. Davis, PhD, USAF Major Retired, Director, Faculty Development, OU-HCOM/Center for Osteopathic Research and Education (CORE)

Related Content

- ▶ [CMS Billing Guidelines for Teaching Physicians, Interns, and Residents \(pdf\)](#)

slido



What other ways you would like to be supported as a DCOM preceptor?

① Start presenting to display the poll results on this slide.

Communication with Office of Clinical Education



How to reach us

Clinical Education Department:

Anya Cope - DO Assistant Dean of Clinical Affairs &
Assistant Professor of Internal Medicine
Anya.Cope@lmunet.edu 423-869-6605

Cassi Jones - DO Director of Clinical Affairs &
Assistant Professor of Clinical Medicine
Cassi.Jones@lmunet.edu 423-869-6438

Anita Sutton - Rotations Director
Anita.Sutton@lmunet.edu 423-869-6497

How to reach us

Preceptor Development Committee:

Dr. Cope – Associate Dean of Clinical Affairs, Associate Professor of Internal Medicine

Anya.Cope@lmunet.edu 423-869-6605

Dr. Jones - Associate Dean of Clinical Medicine and Assistant Professor of Internal Medicine

Cassi.Jones@lmunet.edu 423-869-7131

Dr. Defranco – Chair of Family Medicine, Associate Professor of Family Medicine

Gina.Defranco@lmunet.edu 865-338-5700

Dr. Snodgrass – Professor and Chair, Psychiatry

Leah.Snodgrass@lmunet.edu 423-869-6468

Amy Drittler – Director of Alumni Services and CME, DCOM

Amy.Drittler@lmunet.edu 423-869-6252

Dr. Darter – Assistant Professor of Family Medicine

Danielle.Darter@lmunet.edu 865-338-5689

Questions/Comments/Tips to share?



References

- “Teaching when time is limited” BMJ. 2008 Feb 16; 336(7640): 384-387
- “Prompting medical students to self-assess their learning needs during the ageing and health module: a mixed methods study” Med Edu Online. 2019 24(1):1579558