

Fiberoptic Nasopharyngoscopy Anatomy and Pathology

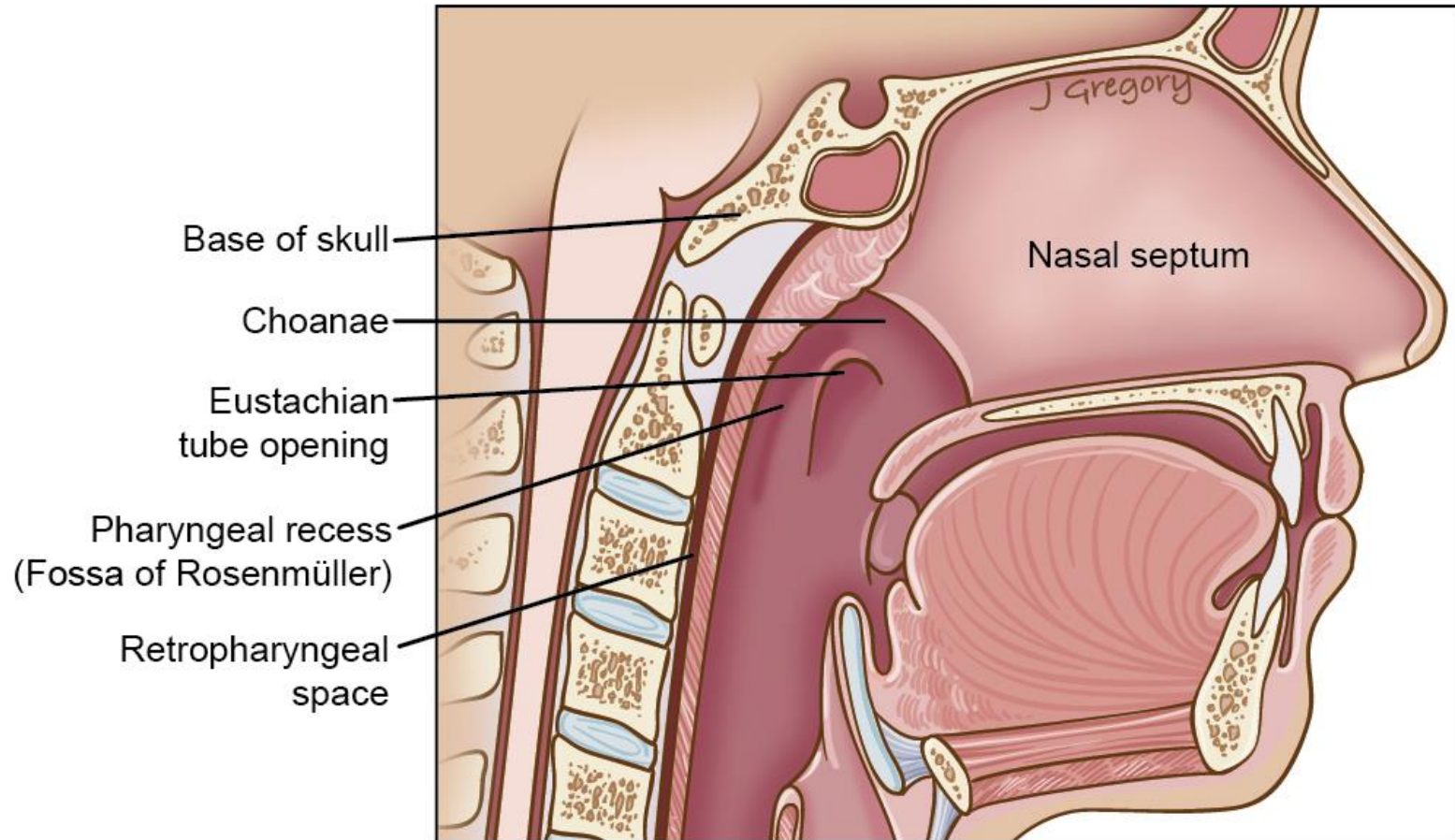
Mark Gurley, MD, FAAOA



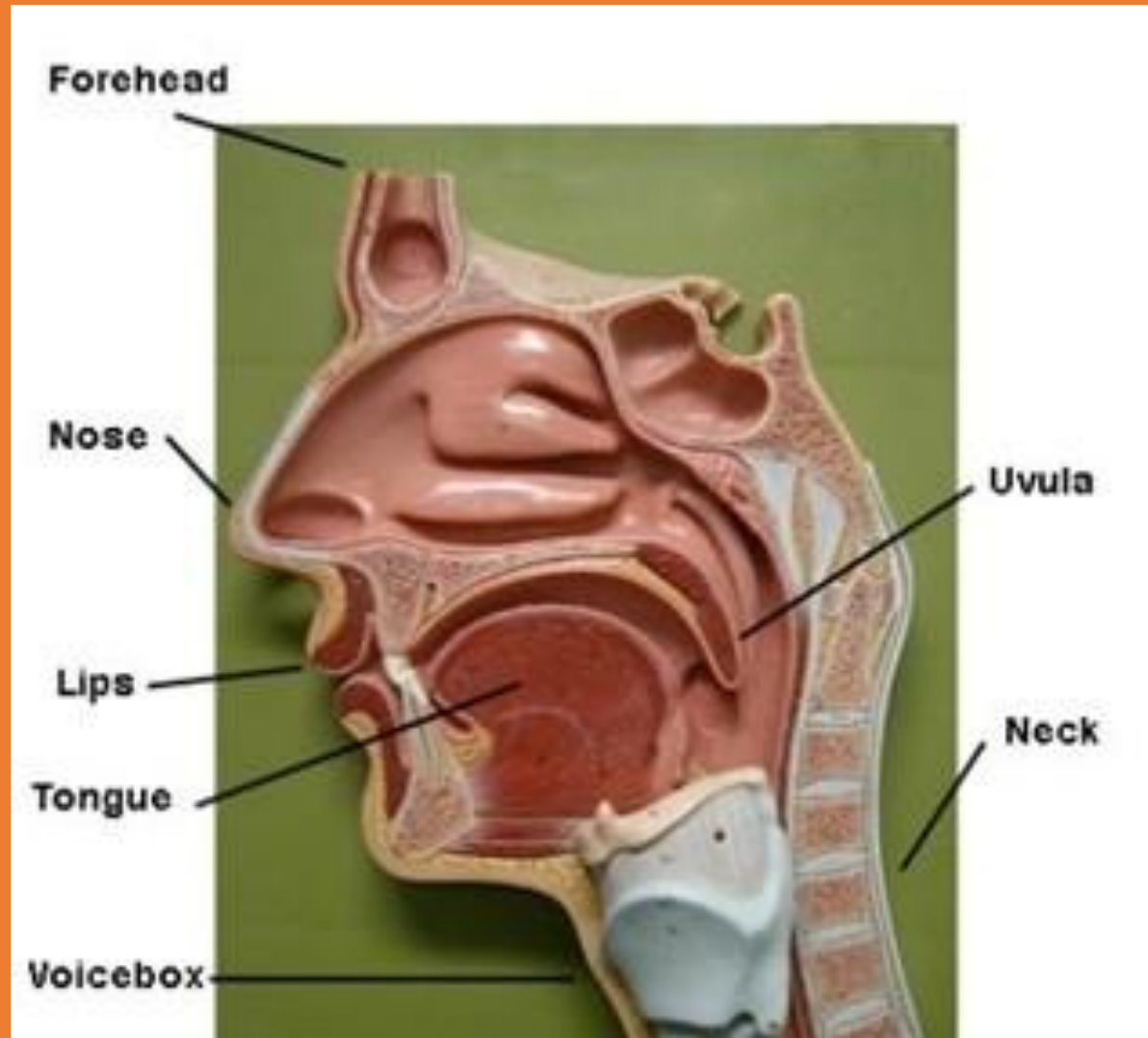
Fiberoptic Nasopharyngoscopy Anatomy

- Anterior Nasal Cavity
- Posterior Nasal Cavity/Nasopharynx
- Posterior Pharynx
- Supraglottis
- Glottis
- Pyriform sinuses

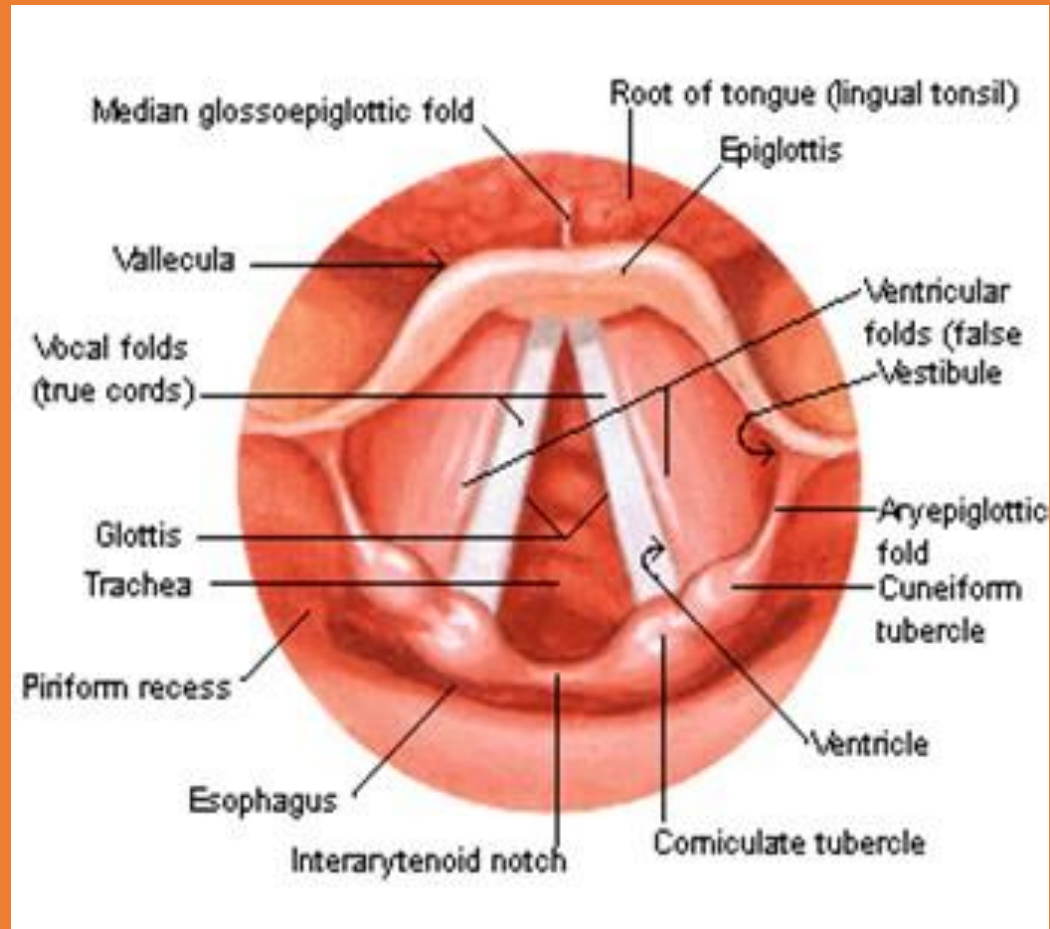
Overview Sagittal View



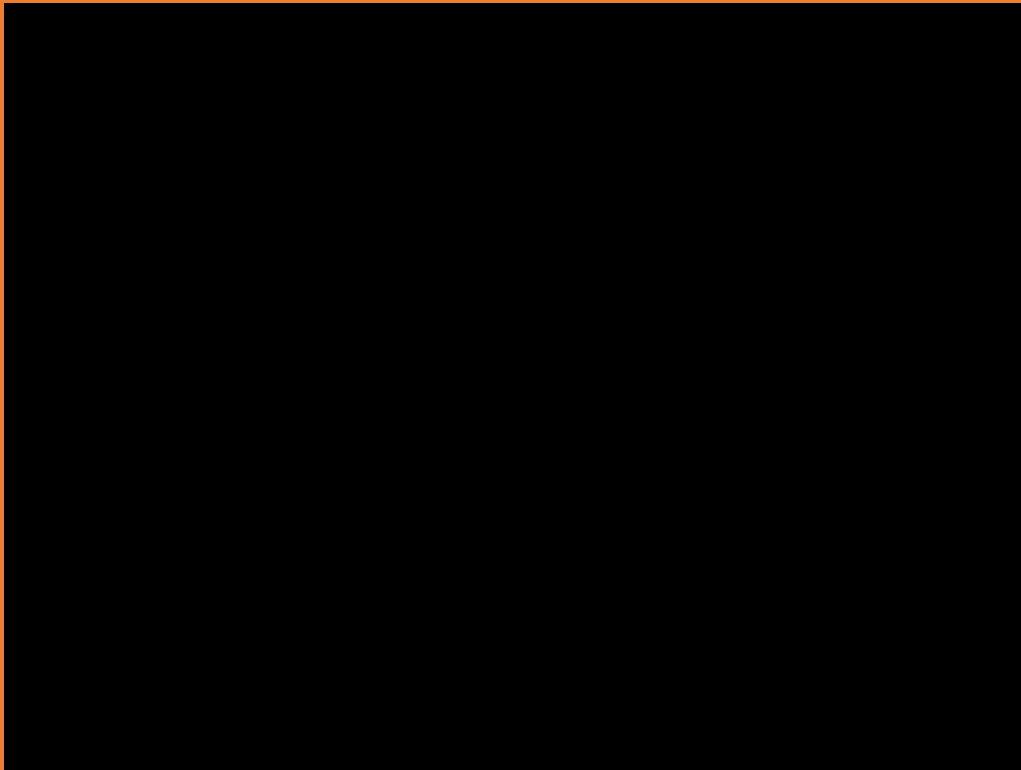
Model View



Laryngeal Anatomy

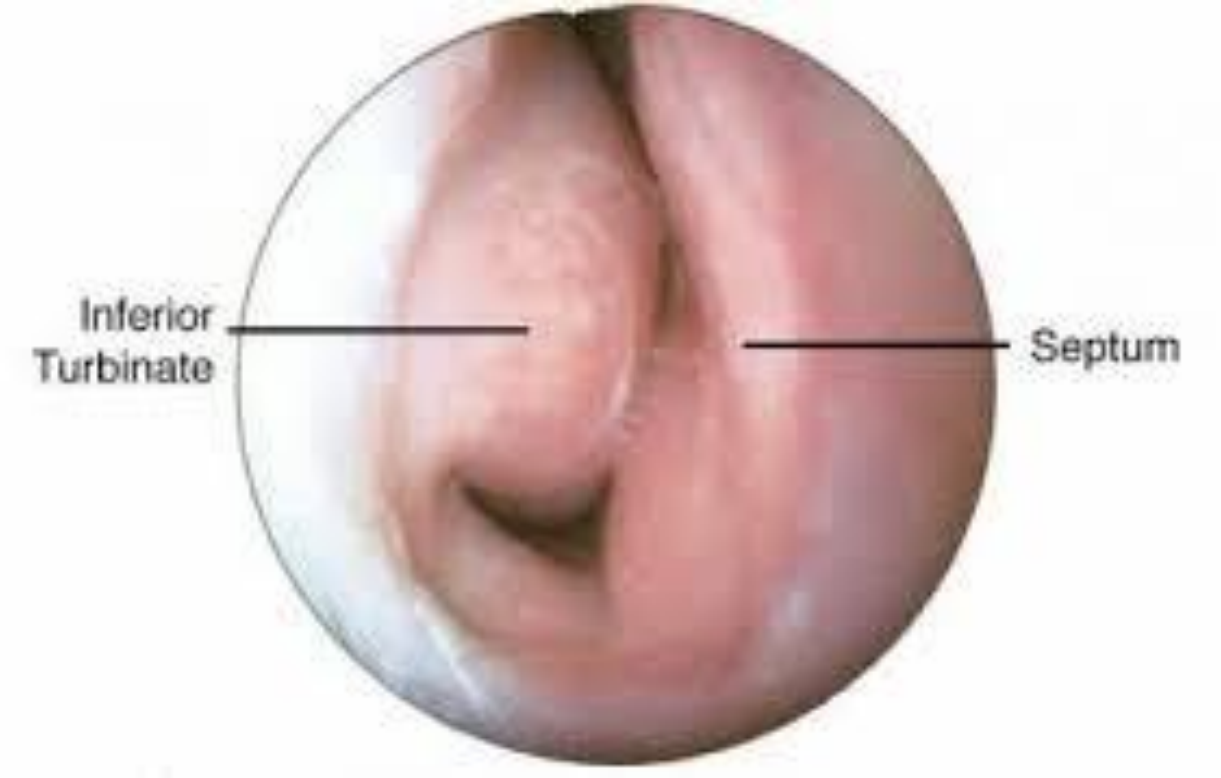


Normal vocal fold motion





Anterior Nasal Anatomy



Anterior Nasal Cavity View



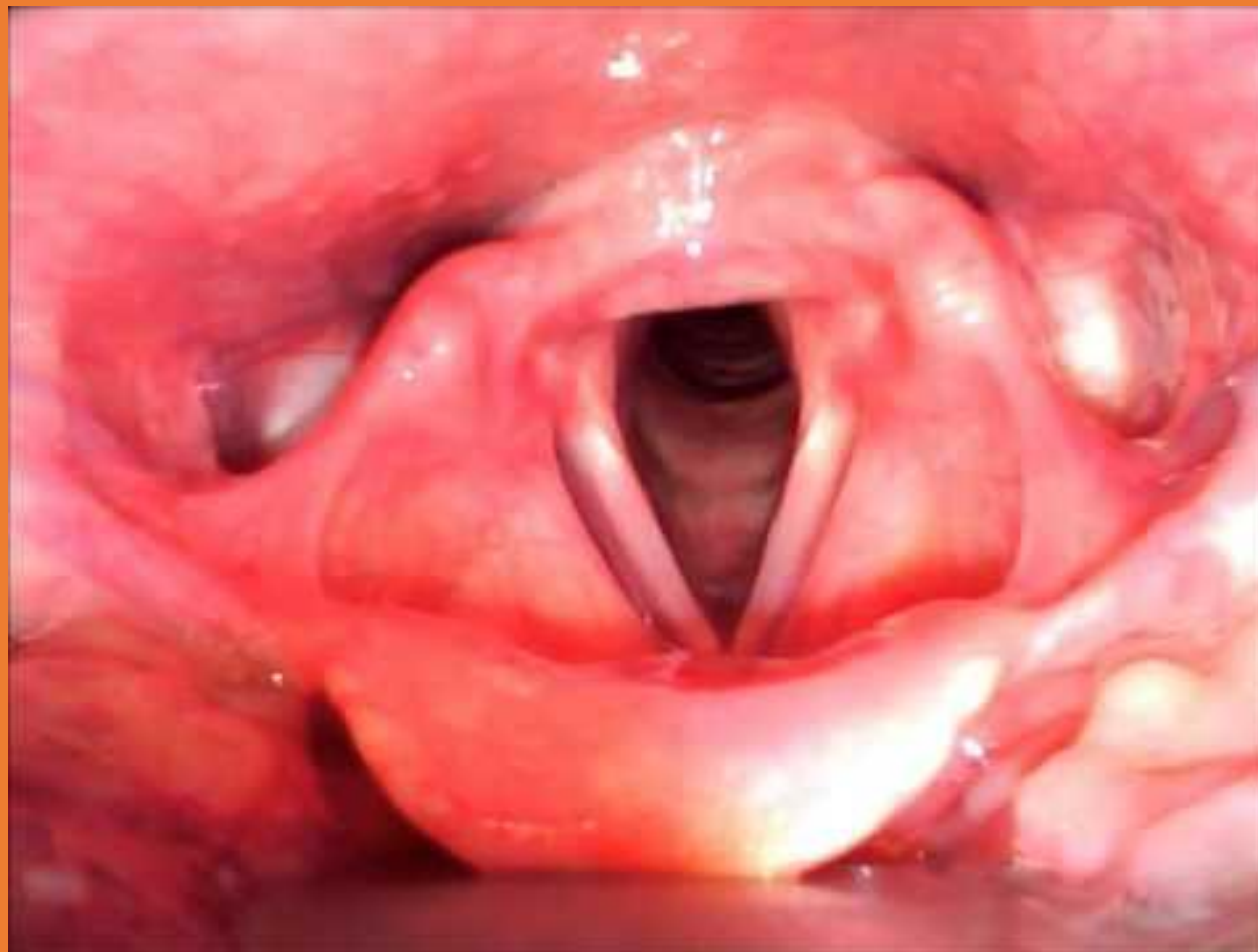
Posterior Nasal Anatomy



Posterior Pharynx

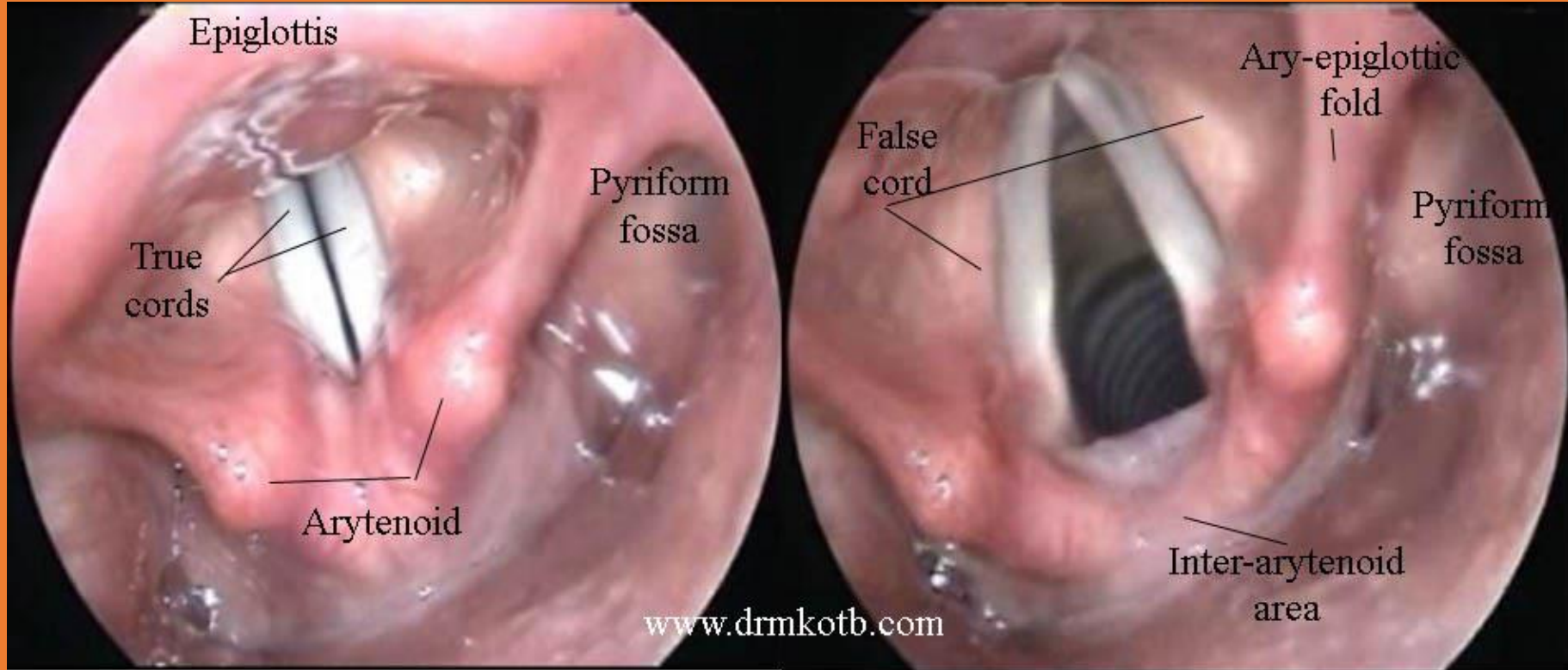


SupraGlottis



Pyramidal Sinus



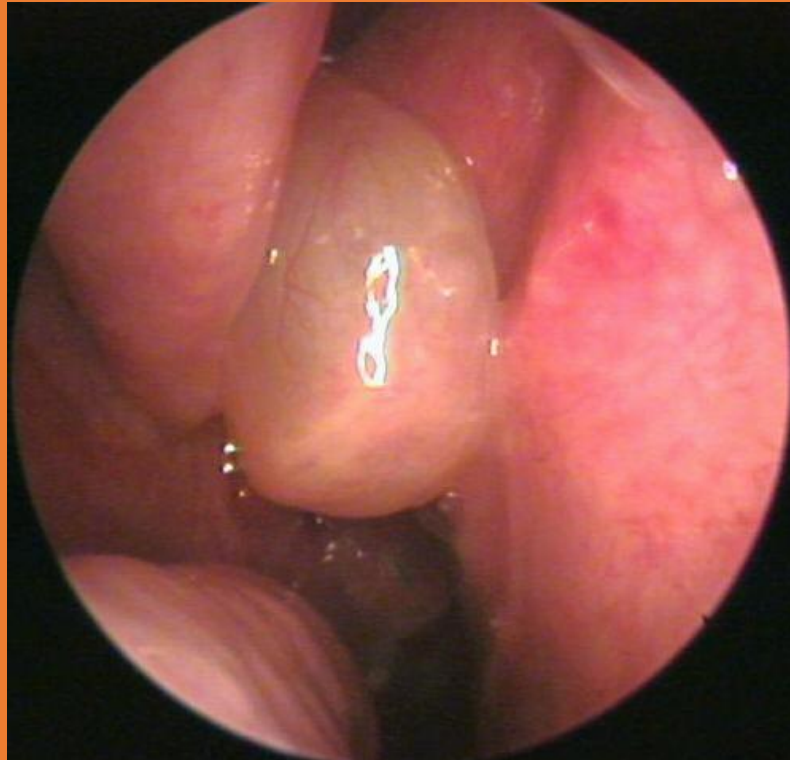


Larynx in adduction

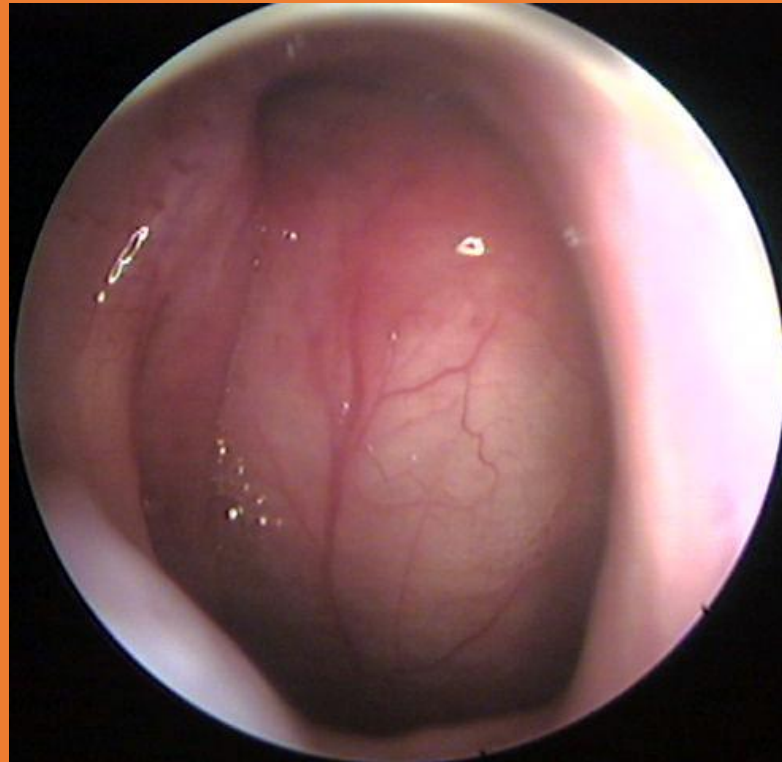
Larynx in abduction

©www.drmmkotb.com

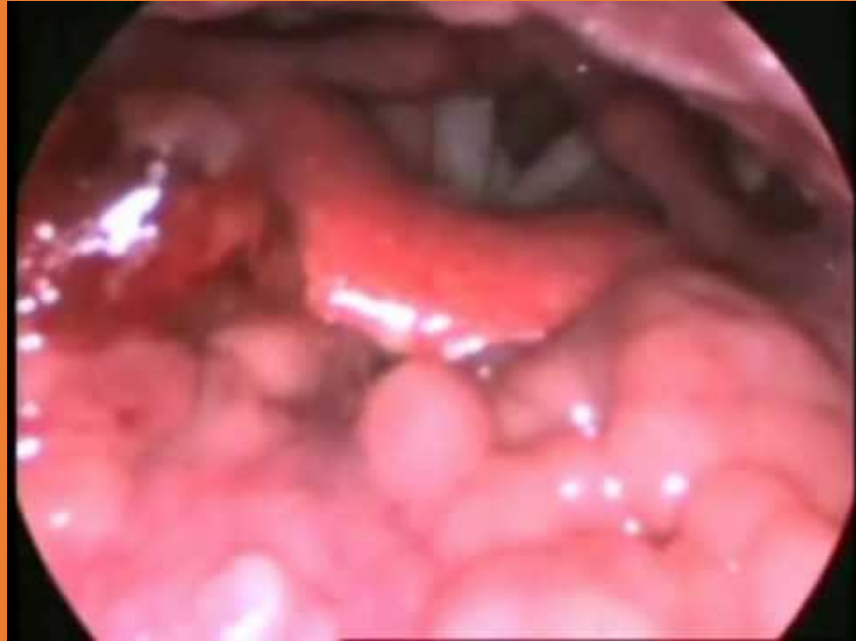
Nasal Polyp



Nasopharyngeal Cyst



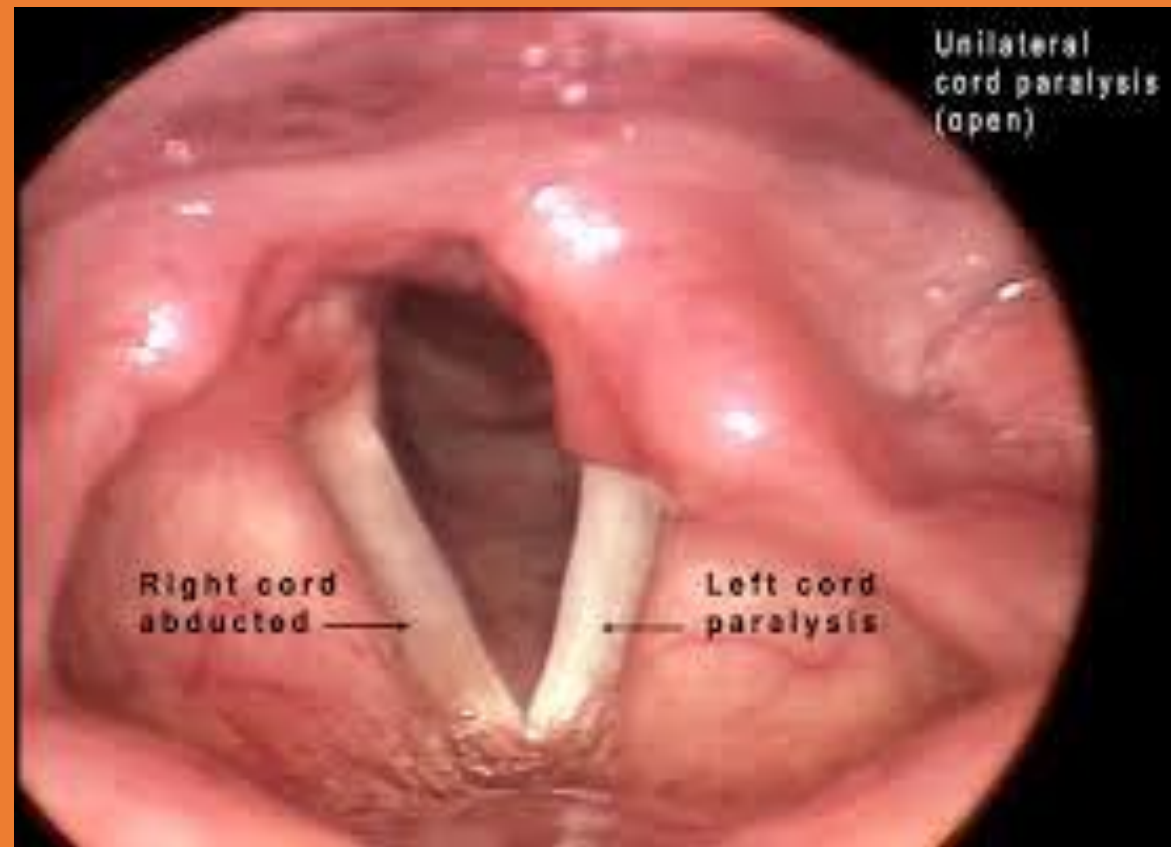
Lingual Tonsils



Epiglottitis



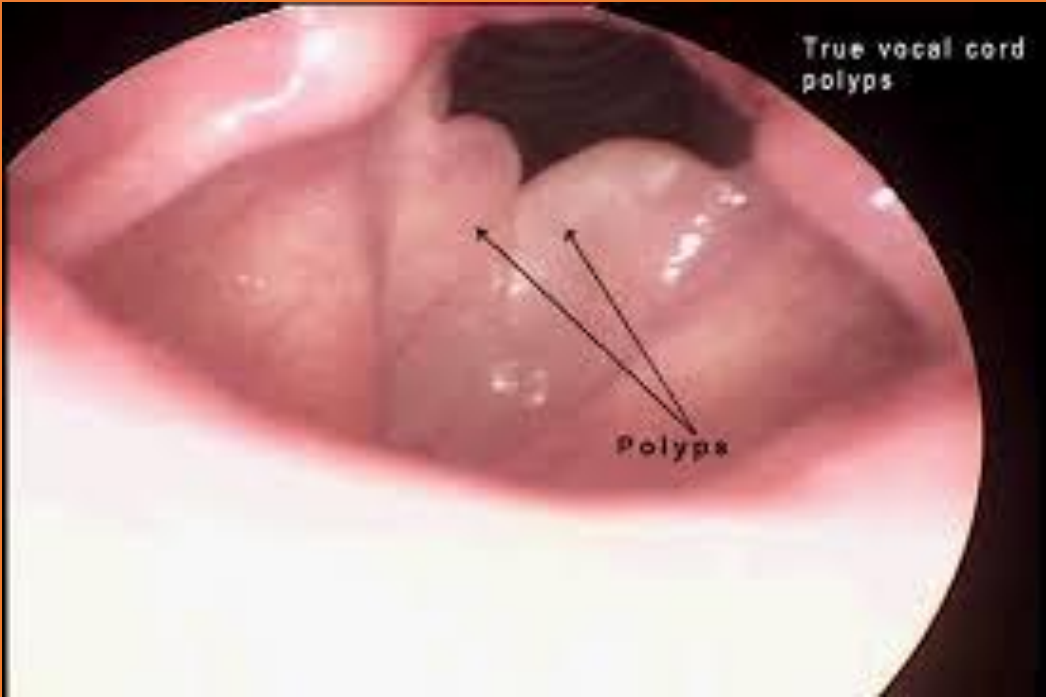
Vocal Cord Paralysis



Reflux



Vocal Cord Polyps



Subglottic Stenosis



Granuloma



Nodules



Subglottic Stenosis



Malignancy



Presbylarynx



Leukoplakia



Fungal



Resources

- <http://www.gbmc.org/vocalpathologyimagelibrary>